

# INSTALLATION STEPS

PLEASE READ THESE INSTRUCTIONS FULLY AND CAREFULLY **BEFORE** BEGINNING INSTALLATION

## TOOLS REQUIRED

- **LIFTING RING**
- **MOTOR CRANE**
- **PHILLIPS HEAD SCREWDRIVER**
- **HAMMER AND PUNCH** (If new holes are needed)
- **DRILL** (If new holes are needed)
- **1/2" DRILL BIT** (If new holes are needed)
- **3/4" WRENCH**
- **3/4" SOCKET**
- **TORQUE WRENCH**
- **3/8" ALLEN WRENCH**

## STEP 1



*Remove your outboard. If you have never done this before, it is highly recommended you have a professional take care of this. If you are doing it yourself, make sure you have the proper lifting ring for your motor.*

## STEP 2

*Determine if you need to drill any holes. Your Jack Plate was shipped with a mounting template. Our bolt hole pattern is the most common used by manufacturers for “bolt-on” type motors so it is very likely you can use your existing motor holes. For maximum strength and security, we **STRONGLY** suggest you use this pattern.*

*If you do need to drill new holes, use the provided template to mark their location. To do this, tape the provided template in place and then mark the hole locations with a punch. You will then use a 1/2” Drill Bit to drill the holes (you may want to drill through with a smaller bit first)*

***NOTE:** The actuator unit of the Magnum is mounted slightly off center. Therefore, it **MUST NOT** be used as a “center point” for mounting the Magnum or outboard motor. Use the supplied template only.*

## STEP 3



*Check the condition of your transom and repair any cracks, dry rot, etc. You will also want to fill any unused holes with silicone sealant. Be sure to clean away excess sealant so the Magnum has a flush surface to mount against.*

## STEP 4

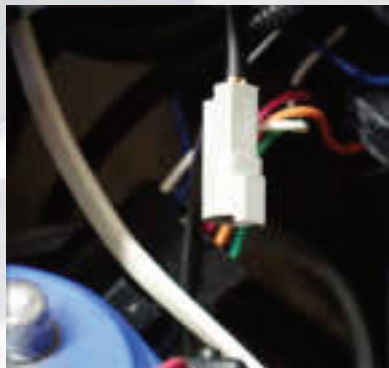


*Secure the Magnum to your transom with the 1/2" stainless steel bolts, washers, and lock nuts provided. Refer to your boat's owner's manual for proper torque specifications.*

## STEP 5

*Mount the Relay Control Box near the battery where the Red (+) and Black (-) control wires will reach their respective battery posts. The control box is water resistant but cannot be submerged so find a location which will allow the control to stay as dry as possible.*

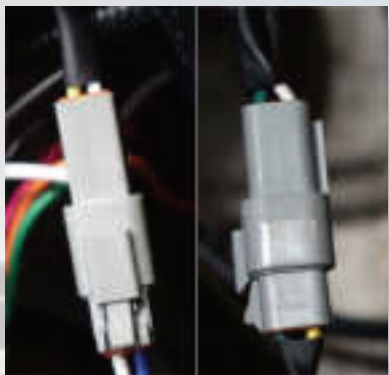
## STEP 6



*Route the motor cable to the Relay Control Box.*

***NOTE:** The Magnum's actuator is equipped with a breather tube which runs along the motor cable. As you route the motor cable to the control box, great care must be taken to ensure that the breather tube is not blocked or constricted in any way.*

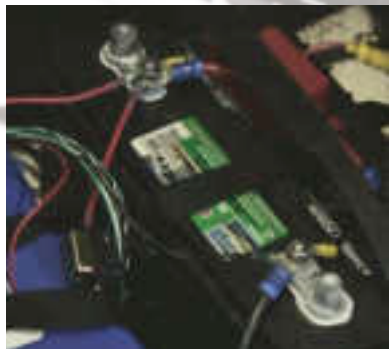
## STEP 7



*Mount your Two-Button Switch wherever you would like it and route the switch cable back to the control box. Connect the switch cable and the motor cable to the control box. Ensure that you line up the locking mechanisms of each connector and that they fully lock together.*



## STEP 8



*Connect the Relay Control Box to the battery. The Red (+) wire will go to the Red (+) battery post and the Black (-) wire will go to the Black (-) post*

## STEP 9



*Attach your outboard motor to the Magnum. Refer to your motor owner's manual for proper torque specifications.*

*NOTE: The Magnum is designed with multiple height adjustments. There is no exact way to determine which will work best. Factors such as boat model, engine size, gear placement, etc. can all affect performance. Some adjustment may be required to get the optimum performance out of your plate.*

***\* \*Check and re-tighten (if necessary) all mounting bolts after one hour of use \* \****